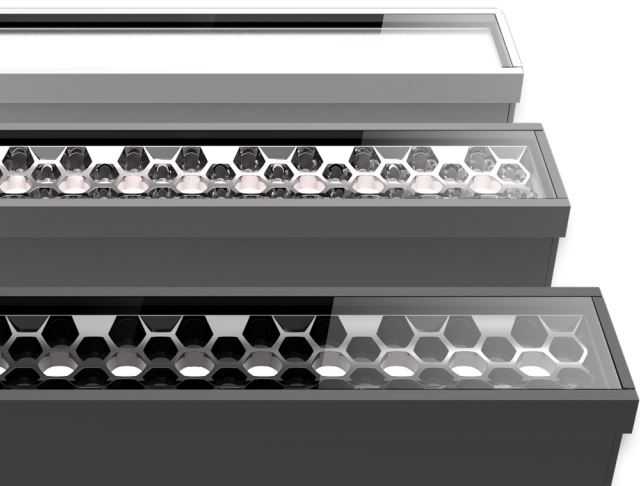


# BILLET

OPAL & LINEAR LENSES

**bold**  
lighting



Whether for inground, ceiling, or wall recessed applications, Billet allows you to maintain the same optical performance, light consistency, and overall aesthetics throughout the project. Our team worked tirelessly to unify the baffles design of the Wallwasher, the Wallgrazer and the general illumination products into a uniform shape that reflects the unity and harmony spirit we wanted in this product. The unique optical design of Billet, offers a high flexibility of light source colors, ranging from static white, to Dim-to-Warm, to Tunable White and even to RGBW.

## CONSTRUCTION

**Product Type** : Billet

**Body Material** : Extruded Aluminum

**Body Finish** : Black, Grey, White or Custom RAL colors

**Light Source CCT** : 2,700K / 3,000K / 4,000K / Tunable White 2,700K-5,000K / Dim to Warm 1800K-3,000K / RGBW  
**Color Rendering Index** : Ra 80 and Ra 90

## INSTALLATION

**Environment** : Wet rated **IP66** | **IP67**

**Mounting** : Inground, Wall recessed, and Ceiling Recessed with Trim & Trimless

**Dimensions** : W. = 2", H. with Remote Driver = 2" | H. with built-in driver = 3-1/4"

## OPTICS

**Optics Distribution** : Opal Lens Lambertian, Asymmetric & Elliptical Distributions.

**Glare Control** : Low Glare Lens

## ELECTRICAL

**Input Voltage** : 120V / Universal 120-277V - 50Hz/60Hz

**Load** : 4W/ft. to 22W/ft.

**Output Type** : Constant current

**Driver type** : Built-in and Remote

**Dimming** : 0-10V / DALI / ELV / DMX

## Series Mounting Overall Height

<b>BOW</b>	ID	Inground Integral Driver	3-1/4 in.
	IR	Inground Remote Driver	3-1/4 in.
	CD	Ceiling Recessed (ICA)	3-1/4 in.
	CT	Ceiling Trimless (ICA)	3-1/4 in.
	MW	Millwork Recessed (ICA)	3-1/4 in.
	WR	Wall Recessed Remote Driver	2 in.

## LIGHT SOURCE

**Direct Light Source** : Mid-Power LEDs

**Luminous Output** : from 500lm/ft. to 2,500lm/ft. (Delivered)

Code example: **BOW**-ID-S-930-L-WF-W-10-C12

Output*	CRI	Color Temp	Beam	Baffles Finish	Body Finish	Dimming	Length
L 500lm/ft (4W)	8 +80	27 2700°K	A Asymmetric	00 None	W Flat White	00 No Dimming	12 12" (30cm)
S 1,250lm/ft (9W)	9 +90	30 3000°K	E <sup>3</sup> 15° x 50°		B Flat Black	11 0-10V to 1%	24 24" (60cm)
H 2,500lm/ft (22W)		35 3500°K	L Lambertian		S Silver	10 0-10V to Fade-off	36 36" (90cm)
W <sup>1</sup> 2,100lm/ft (22W)		40 4000°K			C Custom	EL ELV Dimming	48 48" (120cm)
T <sup>2</sup> 1300lm/ft (2x12W)		WD 3000°K-1800°K				LT Lutron Ecosystem	60 60" (150cm)
		TW 2700°K - 5000°K				D1 DALI to 1%	C00 Continuous Run*
						D2 DMX	*Measured in feet

## Notes:

<sup>1</sup> Denotes output specific to Dim-to-Warm.

<sup>2</sup> Denotes output specific to Tunable White.

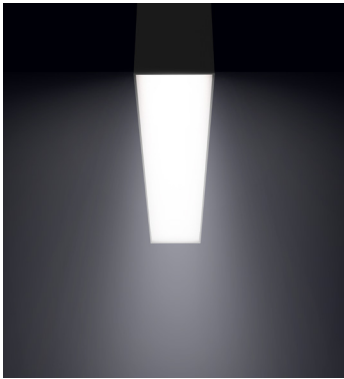
<sup>3</sup> Elliptical beam also available in other angle values  
Check with Factory for Lead-times.



e: info@boldlighting.us t: +1-833-BOLD-1-US +1-833-265-3187

**Bold Lighting**  
Atlanta, Georgia, USA  
www.boldlighting.us

## OPTICAL FLEXIBILITY



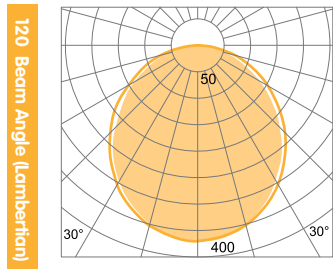
OPAL LAMBERTIAN DISTRIBUTION



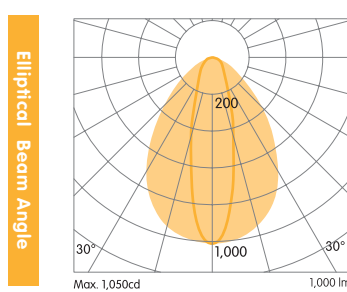
ELLIPTICAL BEAM DISTRIBUTION



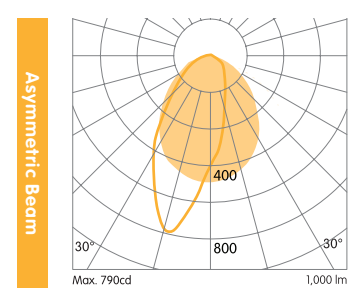
ACCENT SYMMETRICAL BAFFLE



The traditional Lambertian curve is still the most versatile distribution for general lighting. It offers a soft and even illumination on both horizontal and vertical surfaces.

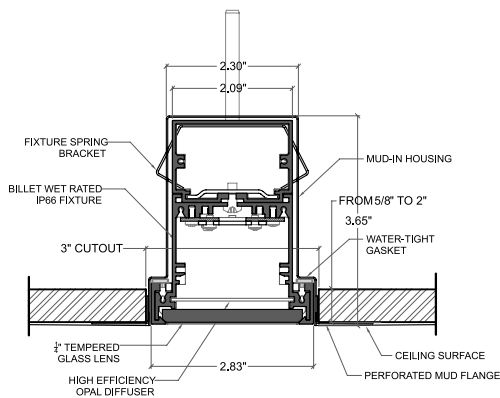


The elliptical beam is a good addition to the available distributions, offering the option of illuminating long narrow spaces or grazing vertical surfaces to accentuate their texture.

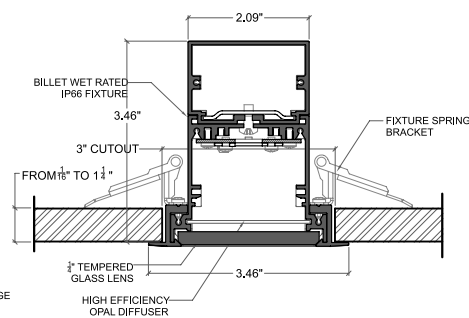


The Asymmetric distribution can be used for illuminating both horizontal and vertical surfaces. It allows an asymmetric distribution on horizontal surfaces and wallwashing on vertical surfaces.

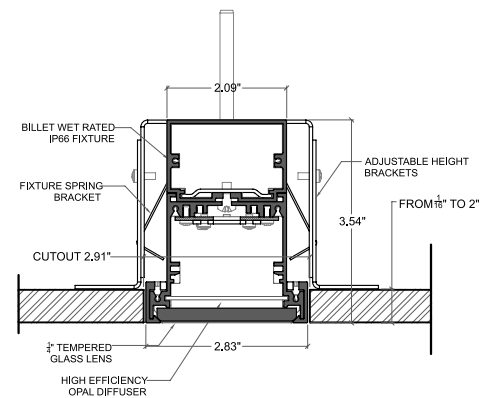
## DIMENSIONAL DRAWING:



RECESSED TRIMLESS



RECESSED WITH TRIM



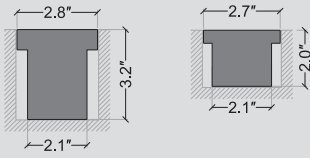
RECESSED MILLWORK



**Bold Lighting**  
 Atlanta, Georgia, USA  
[www.boldlighting.us](http://www.boldlighting.us)  
 e: [info@boldlighting.us](mailto:info@boldlighting.us)  
 t: +1-833-BOLD-1-US +1-833-265-3187

## MOUNTING FLEXIBILITY

### INGROUND RECESSED



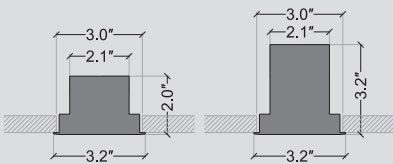
L= 12.5" | 24.3" | 36.1" | 48.0" | 60"

W= 2.7"

H1= 2.0" with remote driver

H2= 3.2" with Integral driver

### RECESSED WITH TRIM



L= 13.3" | 25.1" | 36.9" | 48.8" | 60"

W= 3.2"

H1= 2.0" with remote driver

H2= 3.2" with Integral driver

### LABELS:



ETL Report# 103752046ATL-002, tested to UL standards 1598 and to CSA Standards C22.2#250.0

UL Wet listings and **IP66** | **IP67** Rated (tested by third party lab)

IC/Airtight, compliant



CE Certified

Bold Lighting

Atlanta, Georgia, USA

[www.boldlighting.us](http://www.boldlighting.us)

e: [info@boldlighting.us](mailto:info@boldlighting.us)

t: +1-833-BOLD-1-US +1-833-265-3187